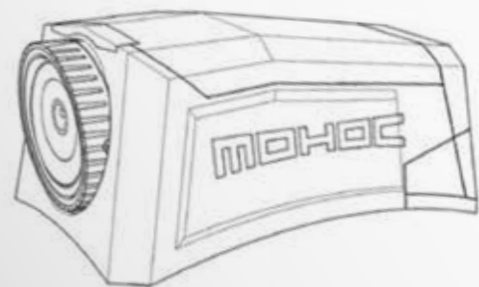


MOHOC

ELITE OPS CAMERA



QUICK START GUIDE

OVERVIEW

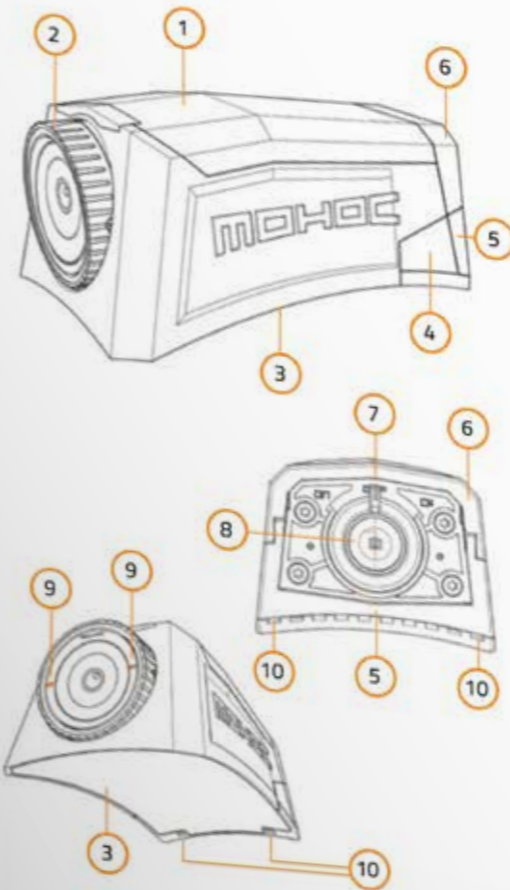
Included in the box:

- 1 MOHOC™ camera
- 1 Li-Ion Rechargeable battery
- 1 Lanyard
- 1 Micro USB cable
- 2 Velcro™ mounting patches
- 1 MOHOC™ bag
- 1 MOHOC™ sticker

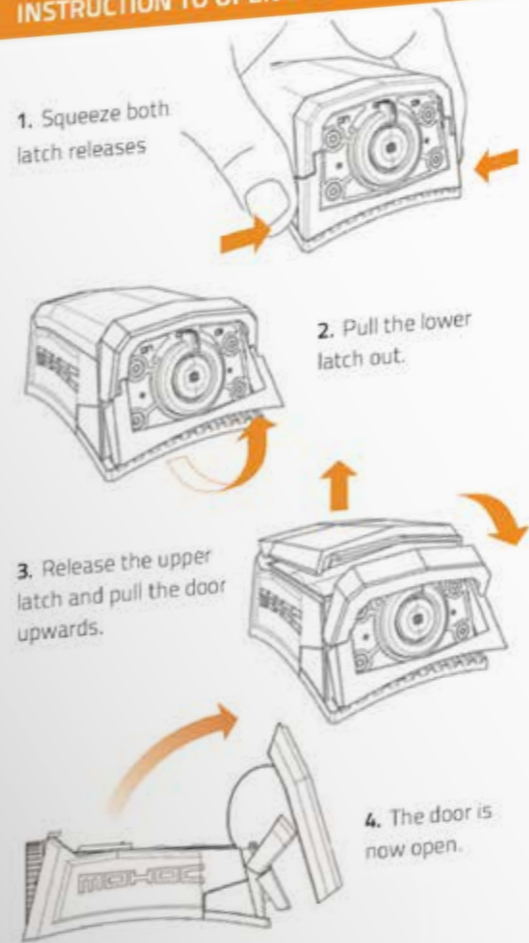
The MOHOC™ Camera

- ① Door
- ② Rotating lens barrel
- ③ Curvelock™ base
- ④ Latch release
- ⑤ Lower latch
- ⑥ Upper latch
- ⑦ ON/OFF/RECORD toggle
- ⑧ Photo button
- ⑨ Lens level indicators
- ⑩ Lanyard anchor points

OVERVIEW



INSTRUCTION TO OPEN DOOR



MICRO SD & BATTERY INSERT

Micro SD Card

Insert micro SD Card (Class 10, UHS-1 or higher required).

Sold separately.



Li-Ion Rechargeable Battery

Insert rechargeable battery and connect micro USB to charge. For fastest charging plug into wall power outlet, camera charges in all 3 positions: ON, OFF, Record. To charge with computer USB, camera must be in ON position.

CR123A Battery

Insert 2 CR123A batteries (positive terminals to the right).

Sold separately.

To ensure optimal and safe performance we only recommend you purchase from a well-known manufacturer such as Panasonic®, Energizer® or Duracell®



CAMERA OPERATION

Rotate Toggle to desired position: ON, OFF, or Record

1. Powers ON and starts recording.



2. Powers ON in standby mode.

3. Turns camera OFF.



4. Photo Button:

With toggle in either ON or Record position press the photo button to capture still images.

